

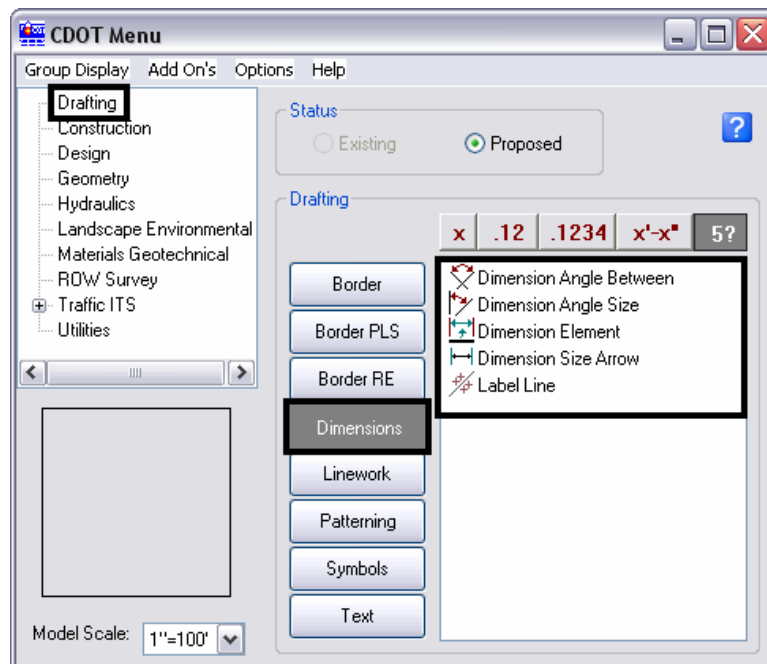
CDOT Two Line Note Placement



This document guides you through placing a note with two lines of text with a leader line located between the lines of text.

Setting Symbolology

1. To set the proper symbolology for the note, select **Drafting** from the **CDOT Menu Explorer**.
2. Select the **Dimension** category button from the **Drafting** area.
3. Select any one of the items displayed in the item list.

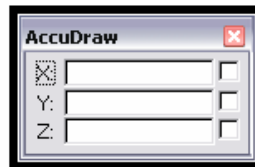
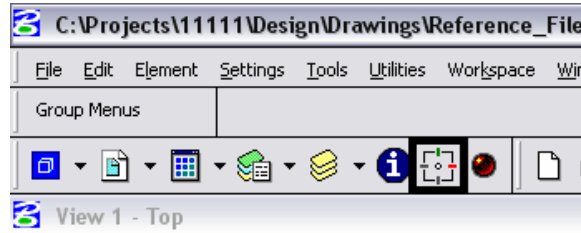


This sets the level to **DRAFT_Text-1** and the symbolology to **By-Level**. The CDOT Menu can now be minimized.

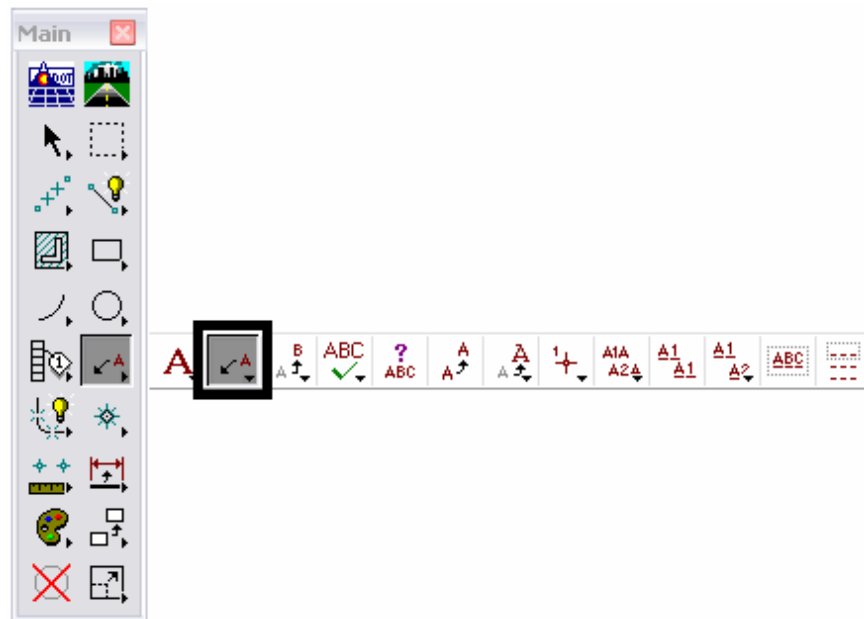
CDOT Two Line Note Placement.pdf

Placing A Two Line Note

4. Turn AccuDraw *On* from the Primary Tool Bar. This will display the AccuDraw window.

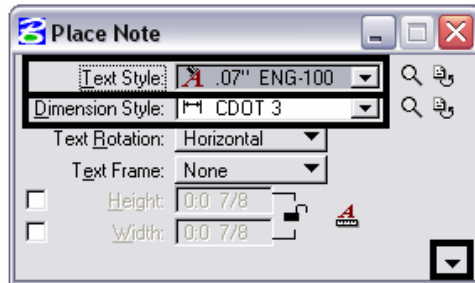


5. Select Place Note from the Text menu.

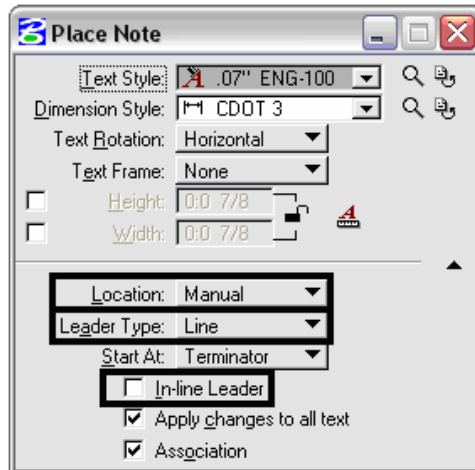


CDOT Two Line Note Placement.pdf

6. In the **Place Note** dialog box, select the desired **Text Style** from the drop-down list.
7. Use the **Dimension Style** drop-down list to set the desired dimension style.
8. <D> on the **Expand** arrow.



9. Set the **Location** to **Manual** using the drop-down list.
10. Set the **Leader Type** to **Line** using the drop-down list.
11. Remove the check from the **In-line Leader** checkbox.



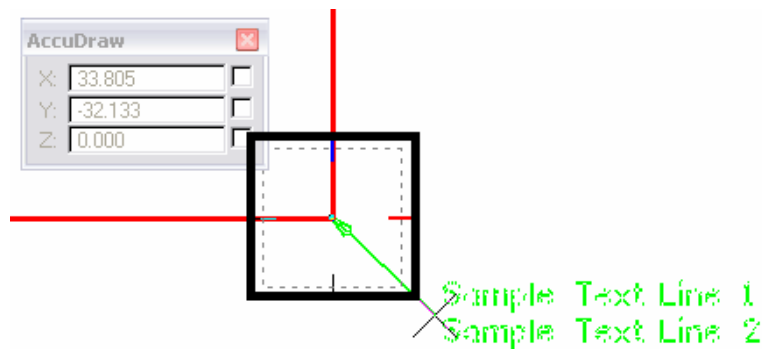
Note: Depending on the Dimension Style selected, some of the above settings may be set by default.

CDOT Two Line Note Placement.pdf

12. **Key-in** the desired text. Type the first line of text; press the 'Enter' key then, type the second line of text.

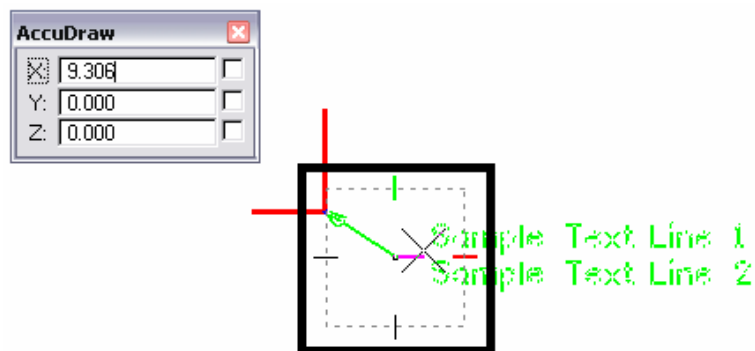


13. <T> (if desired) then <D> on the location of the note terminator.



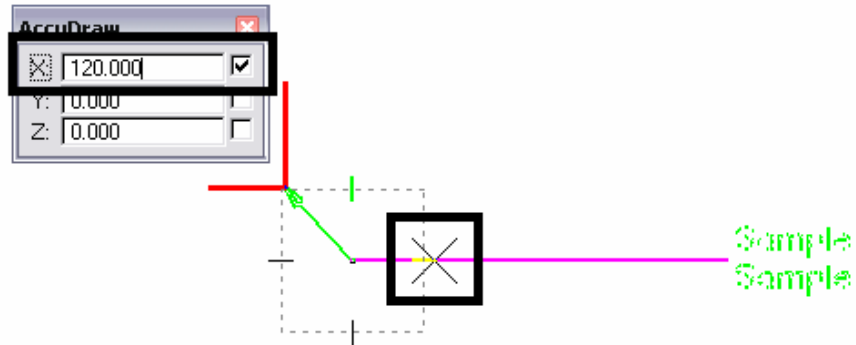
Note: in the example above a Tentative then Data was used to place the note terminator on the corner of the red linestring. If AccuSnap is on, it can be used to locate the terminator end of the leader.

14. <D> to place the end of the first leader segment. The AccuDraw compass will now be centered on this point.



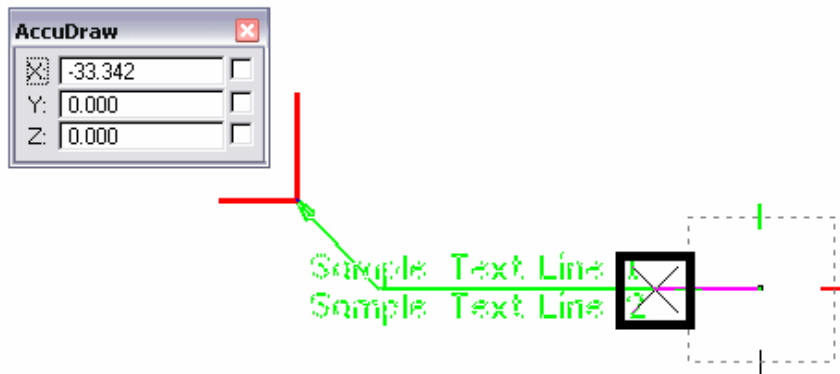
CDOT Two Line Note Placement.pdf

15. Move the cursor on to the AccuDraw compass point that is in the direction the second segment is to be placed, then *key in* the desired length. The keyboard automatically defaults to the AccuDraw window and the proper field will be active. <D> to place the end of the second segment.



Note: Placing the cursor on the AccuDraw compass point “locks” in the angle of the line. Also, the second segment of the leader can be placed dynamically if desired.

16. Move the Cursor on to the leader segment that was just drawn and <R>. This action will place the text on the leader line.



17. The finished note is shown in the illustration below.

